

C770 Series Cotton Harvesters Brochure



JOHN DEERE



CP770 AND CS770 COTTON HARVESTERS

You plant it. You protect it. You sweat over it and fret over it. So when it comes time to harvest, make sure you're getting everything you can out of your cotton crop with the CP770 and CS770 Cotton Harvesters from John Deere. Redesigned from a clean sheet of paper, and with direct input from cotton growers across the country, the C770 Harvesters give you exactly what you asked for: a faster harvest, thanks to the high-speed row units and 12-row stripper headers. Plus, the module building and handling system offers a significant reduction in wrap¹ and hauling costs¹, while the redesigned engine and power module offer higher transport speeds and a more fuel-efficient operation². And when you're spending hours each day in the cab, take advantage of our latest precision and remote technology offerings.



¹ Based on internal testing comparing C770 with C690. Individual results may vary.

² The CP770 uses 20% less fuel compared to a CP690. The CS770 uses 15% less fuel than the CS770. Based on internal testing. Individual results will vary based on operator and crop conditions.



CS770 COTTON STRIPPER

- Available 8- and 12-row heads, including the SH12F Folding 12-Row Header
- Up to 32 km/h transport speed
- 15% greater fuel efficiency**
- 13.6 L, 515 hp engine
- 12% reduction in wrap and hauling costs**



CP770 COTTON PICKER

- 13.6 L, 555 hp engine
- 20% greater fuel efficiency*
- Up to 32 km/h transport speed
- 8% reduction in wrap and hauling costs*
- 7 km/h synchronise harvest speed

*Compared to the CP690 **Compared to the CS690

CONTENTS

Engine & Hydraulics 4-5

Cab Comfort & Convenience 6-7

Technology 8-11

Wrap & Module Handling 12-13

Headers & Row Units 14-15

John Deere Lifecycle Solutions ... 16-17

Specifications 18-19

POWER WITHOUT COMPROMISE



When every minute matters, you need simple, reliable muscle that can get you through the heaviest yields with power to spare. So when we redesigned the C770 Series' engine and hydraulic module, we started with the proven JD14P John Deere 13.6L engine, tuned to deliver the horsepower you need when you need it, while also delivering lower overall fuel consumption¹, reduced noise levels², and higher transport speed.

But we know power isn't the only priority; there's not a second to waste on complicated, time-consuming maintenance procedures, either. That's why the C770 Series offers easier access to maintenance points, fewer unique engine components, simplified hydraulic routings, reduced fluid volumes, and extended service intervals.

¹ The CP770 uses 20% less fuel compared to a CP690. The CS770 uses 15% less fuel than the CS770. Based on internal testing. Individual results will vary based on operator and crop conditions.

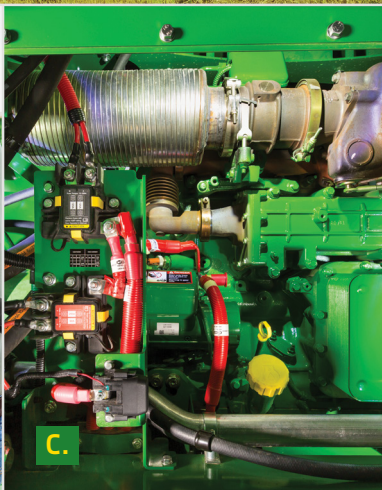
² Savings are based on internal John Deere testing. Individual results may vary.



A.



B.



C.



D.

A. HIGHER TRANSPORT SPEED

Minutes matter when it comes to getting cotton out of the field. You and your operators will appreciate the increased transport speed... you can run from field to field at 32 km/h, up from 27 km/h over previous models.

B. INCREASED FUEL EFFICIENCY

Improved fuel efficiency lets you harvest more with every gallon. The CP770 uses 20% less fuel¹ than its predecessor, while the CS770 uses 15% less fuel than the previous stripper.

C. REDUCED COMPLEXITY

We've redesigned the engine and hydraulic power module with features like common-rail fuel injection, a single-wastegate turbo, and simplified fluid routings, reducing complexity and improving maintenance and serviceability.

D. REDUCED NOISE

With the engine working at an easy 1,900 RPM, you'll notice reduced noise in the cab... 3 dBA less² in the CP770, 5 dBA less³ in the CS770.

¹ Based on internal John Deere testing comparing C770 with older models. Individual results may vary.

² Compared to CP690.

³ Compared to CS690.

C770 SERIES COTTON HARVESTERS / CAB COMFORT & CONVENIENCE



BUILT FOR ALL-DAY COMFORT.

When you're spending hours each day in the cab, comfort and convenience aren't luxuries...they're necessities. So to help keep you fresh and frosty, we equipped the C770 Series cab with a complete range of standard and available features, all designed to keep you going strong during even the longest days.

Our redesigned standard cab offers a full 30% more space than previous models, and features familiar automotive styling, active noise-cancelling materials, heat-to-feet HVAC ducts, a display that swivels with the seat, and plenty of USB ports for your phone, tablet, and other rechargeable devices. Want a ride that's even more plush? Choose any of our Comfort & Convenience packages, and you'll get C-suite features that make the tough days easier.

COMFORT & CONVENIENCE PACKAGES

	PREMIUM	ULTIMATE
Seat	Vision Cloth Electronic Controls Pneumatic Lumbar Mechanical Air Suspension 16° LH/16° RH Swivel Manual Adjust CA	Vision Leather Electronic Controls Pneumatic Lumbar 16° LH/16° RH Swivel Heated Ventilated Active Fatigue Prevention Adjustable Bolsters
Infotainment	16.5 cm (6.5 in.) Touchscreen App Radio / 2 speakers and 1 subwoofer	
StarFire Receiver	Starfire Integrated Receiver	
Business Band Ready	●	●
4 USB & 12V	●	●
Dual Tilt Column	●	●
Foot Rests	●	●
Refrigerator	●	●
Door Cinching		●
Carpeted Floor Mat		●
Leather Wrapped Steering Wheel		●
Active Seat II (e-Active Seat)		●



A.

A. ACTIVESEAT™ II SUSPENSION

ActiveSeat II Suspension reduces vertical seat motion by up to 90%¹, as compared to an air-suspended seat. Standard with Ultimate Cab Package.

B. TOUCHSCREEN RADIO

Available in our Premium and Ultimate Cab Packages, the SiriusXM-ready 16.5 cm (6.5 in.) touchscreen radio lets you connect your smartphone and listen to your favourite music, podcasts, or audiobooks. Two speakers plus a subwoofer give you the ultimate in-cab audio experience.



B.



D.

C. FOOT RESTS

Take a load off and get comfortable with our foot rests, available in the Premium and Ultimate Cab Packages.

D. REFRIGERATOR

Order our Premium or Ultimate Cab Package, and you'll get a roomy fridge, perfect for keeping lunch and drinks cold.



C.

¹ Compared to standard air suspension seats.

COTTON'S MOST ADVANCED TECHNOLOGY

When you harvest with the C770 Series, you're taking the most advanced, most complete portfolio of in-base technology to the field with you. Your guidance, mapping, data-sharing, and remote-diagnostic capabilities start with the integrated G5^{Plus} CommandCenter™ Display; from there, our suite of standard technology products and applications can help you, your consultants, and your ginners make informed decisions that maximise productivity and profitability.





A. JDLINK™ CONNECTIVITY

The C770 Series harvesters come standard with a JDLINK modem and JDLINK connectivity service. JDLINK enables easy, reliable communication between your machines and you, your operators, and your dealer, and allows data streaming to the John Deere Operations Center™. JDLINK Connectivity allows you to analyse machine progress and performance, transfer production data to and from the machines, plus use Machine Alerts and Service ADVISOR™ Remote to pre-empt or diagnose service issues.

B. JOHN DEERE OPERATIONS CENTER

Access field, crop, and machine information anytime, anywhere, on your desktop computer or mobile device through John Deere Operations Center. Operations Center enables you to manage your operation more efficiently, do a better job on every pass, reduce costs, and improve profitability.



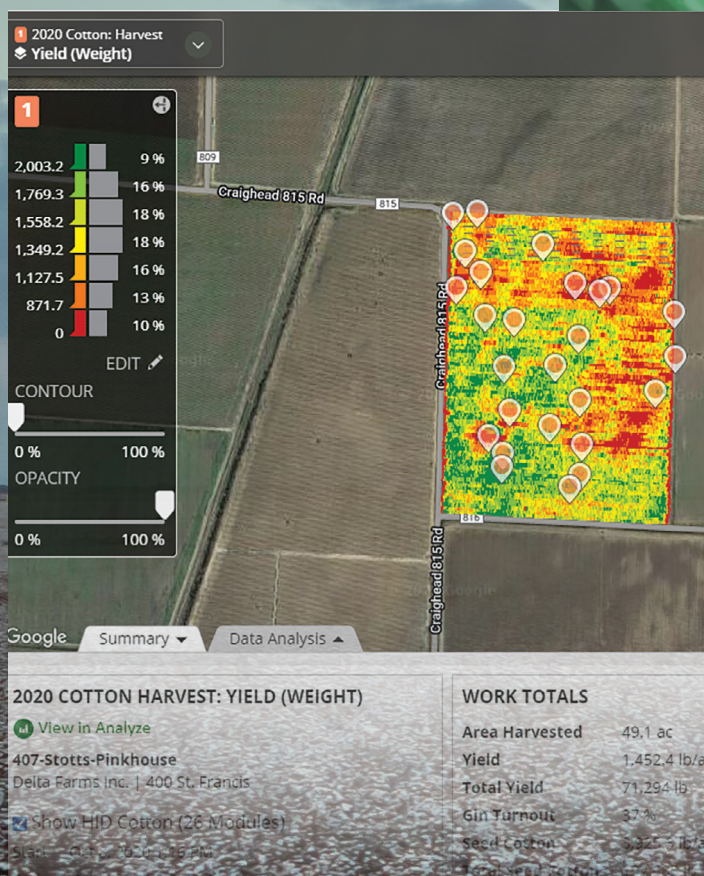
C. ROWSENSE™ AND AUTOTRAC™ GUIDANCE

Stay on the right track with RowSense and AutoTrac Guidance, both standard from the factory. RowSense uses row-unit-mounted mechanical sensors to give you non-GPS guidance through standing crop. When RowSense is engaged, AutoTrac provides secondary GPS guidance to help steer the machine through any gaps in the row. Together, they give you the highest level of guidance accuracy available.



D. HARVEST IDENTIFICATION, COTTON PRO

Capture, store, analyse, and share harvest information down to the module with Harvest Identification, Cotton Pro. This powerful package lets you track 27 individual data points, including moisture and weight, for each module, then merge that information with Field Analyzer to help visualise trends. You can share that information with your gin to help prioritise module movement, allowing them to gin the right cotton, at the right moisture, at the right time. HID Cotton Pro allows traceability from the field, to the gin, to the end use.



E. DOCUMENTATION AND FIELD ANALYZER

Make informed decisions using yield data and the Field Analyzer application. Track your yields from field to field, then generate and share detailed yield maps with your consultants, seed reps, scouts, or other advisors through John Deere Operations Center.

MORE OF EVERYTHING

INTEGRATED G5^{PLUS} COMMANDCENTER™ DISPLAY AND STARFIRE RECEIVER INCLUDED

Our G5^{Plus} CommandCenter display can help you see more, know more, and do more. Offering clear, 1080p HD resolution on a 32.5 cm (12.8 in.) touchscreen, this display is 35% bigger than the previous Gen 4 display. Jam-packed with precision ag technology, the G5^{Plus} CommandCenter offers AutoTrac, Documentation, HID, Cotton Pro, Data Sync, over-the-air updates, and Remote Display Access all in base.

And for those that want more, the G5 Advanced Package Cotton Harvest with AutoPath license, In-Field Data Sharing and optional SF-RTK licences are all available for renewal at 1- or 3-year timeframes.





REDUCE WRAP AND HAULING COSTS BY UP TO 12%*

You needed it, you asked for it, and the C770 Series delivers... a more cost-effective harvest, with a lower per-kilogram wrap cost and more efficient module hauling. How'd we do it? By going back to the drawing board and redesigning the round module builder and the wrapping and handling systems.

Both the CP770 and the CS770 now pack more cotton into each module, reducing the overall cost of wrapping while making for more efficient hauling. The wrap system improves overall feeding and stretching, while the redesigned module-handling system slashes the wrap-eject cycle times by one-third¹.

* Compared to CP690 and CS690.

¹ Based on internal study comparing C770 with C690. Individual results may vary.



**A. DENSER MODULES =
LESS WRAP PER
KILOGRAM**

Both the CP770 and CS770 can make modules up to 243 cm (96 in.) in diameter, allowing you to pack in more seed cotton per module while reducing total wrap costs. Picker customers, the CP770 returns a solid 8%² savings in wrap and hauling costs per lint kilogram; stripper growers, the CS770 gives you a 12%² reduction per lint kilogram in wrap and hauling.

**B. REDUCED MODULE
WRAP TIME**

Our next-generation module handling system cuts the module wrap-eject cycle time by 33%², from 48 seconds to 32 seconds, allowing you to stay at harvest speeds longer, and making every harvest day more productive.

**C. SMOOTHER, EASIER
WRAP FEEDING**

The positive-drive wrap handling system gives you easier reloading and more consistent wrap feeding, module after module.



A.



C.



B.

² Based on internal study comparing C770 with C690. Individual results may vary.

HARVEST MORE HECTARES PER DAY

Picker- and stripper-cotton producers alike have something to celebrate with the C770 Series. We've redesigned the row units and introduced stripper headers, so no matter what type of cotton you produce, you'll get it out of the field faster, with less chance of quality loss from weather.

Picker producers, the PRO16 HS Row Units enable higher picking speeds and more hectares per day, in addition to smoother, more gentle crop engagement and reduced boll loss. Stripper-cotton producers...if you'd like to harvest more hectares per day, we have your answer: the 12-row stripper headers. The SH12F Folding Stripper Header was designed with major productivity and transportability into an easy-folding header. The 12-row rigid header features a redesigned header attachment system for quicker, easier hookup.



PICKER HEADERS

A. HIGHER HARVEST SPEEDS

Get a 5% increase in picking speed, thanks to the PRO16 HS Row Units. You'll fly through harvest at up to 7.4 km/h, compared to 7 km/h for our previous row units. That pencils out to an additional 1.78 hectares during a typical 10-hour harvest day.

B. IMPROVED STALK LIFTERS

In addition to reduced boll loss, the high-speed stalk lifters gently transition the crop into the picking zone, helping enable the PRO16 HS units' higher picking speeds.

C. DIRECT-DRIVE GEARBOXES

Direct-drive gearboxes in the PRO16 HS Row Units deliver smooth, efficient power while contributing to overall fuel savings and reduced maintenance.

STRIPPER HEADERS

A. 12-ROW FOLDING HEADER.

The SH12F Folding Stripper Header gives you 12 rows of harvesting muscle. Attached to the CS770, the SH12F can cover 48%¹ more hectares per hour than an 8-row header on our previous stripper model... that's up to 40 more hectares¹ in a typical 10-hour day. Plus, the SH12F folds in under 2 minutes, and can be transported without removing it from the stripper.

B. THREE AVAILABLE HEADERS.

The SH12F joins our SH8R 8-row and SH12R 12-row rigid headers to create a complete lineup of stripper headers. The SH8R can accommodate 91.4 cm (36 in.), 96.5 cm (38 in.), and 101.6 cm (40 in.) rows; the SH12R can handle 76.2 cm (30 in.), 82.2 cm (32 in.), and 91.4 cm (36 in.) rows, while the SH12F takes on 96.5 cm (38 in.) and 101.6 cm (40 in.) rows.

C. IMPROVED HEADER HOOKUP.

For those times when you do need to attach and detach the header, we've reduced the time required by 50%², to an easy-to-handle 15 minutes².

¹ Based on internal John Deere testing comparing SH12F with 608SH in dryland cotton. Individual results will vary based on operator and crop conditions.

² Compared to 606SH and 608SH models.





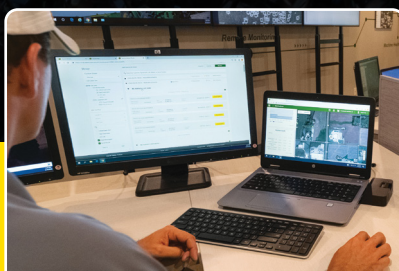
THE CONNECTED SUPPORT YOU NEED

When you're running, you don't want anything to slow you down. Your cotton harvester comes with a JDLink™ connection.¹ Once activated, your John Deere dealer can offer John Deere Connected Support services. With your permission, your dealer can "dial in" to your cotton harvester's diagnostic data and assess trouble codes to help you avoid downtime. Key components include:



SERVICE ADVISOR™ REMOTE

Allows your dealer to remotely analyse Diagnostic Trouble Codes in near real time so technicians arrive on-site with the right parts and the right tools to quickly repair your cotton harvester.



EXPERT ALERTS

An industry exclusive, Expert Alerts is a proactive monitoring system that notifies dealers of potential issues. This allows technicians to remotely diagnose issues (often before an operator/machine experiences any symptoms) and fix them before they become a problem.



REMOTE DISPLAY ACCESS

Lets your dealer remotely and quickly assist you with in-cab display setup and adjustments for optimal cotton harvester performance — eliminating the need for an onsite service call.

¹ Some additional accessories and/or components may be required. JDLink requires a mobile connection to transfer information from machine to John Deere Operations Center™ website. See your John Deere Dealer for coverage availability.



POWERGARD™ PROTECTION PLAN

Protect your investment. The John Deere PowerGard Protection Plan² lets you purchase extended comprehensive coverage or powertrain warranty coverage for up to an additional three years or 3,000 hours over the normal warranty period. You get flexible coverage, low deductibles and peace of mind.

² PowerGard Protection Plan extended warranty covers failures due to defective materials or original workmanship of covered components. Customers have a choice between either the Limited (engine & powertrain) coverage form or the Comprehensive (full-machine) coverage form. See your dealer or JohnDeere.com.au/PowerGard or JohnDeere.co.nz/PowerGard for details.

CP770

Engine		John Deere JD14P - 13.6L
Horsepower		414 kW 555 hp
Power Boost		25 kW 34 hp
Displacement		13.6 L 830 cu in.
Cylinders		6
Turbocharged/Aftercooled		Yes
Alternator		Single 330-amp alternator
Cooling System		
Variable Pitch Reversible Fan		Yes
Ground Level Access to Coolers		Yes
Fuel System		
Type		High-Pressure Common Rail
Governor		Electronic
On Board Diagnostics		Yes
Transmission		ProDrive™ automatic-shift (AST)
Gears		Two range
Sync mode 1 (4WD)		0-7.4 km/h 0-4.6 mph
Scrapping mode 2 (4WD)		0-9.0 km/h 0-5.5 mph
Field Transport mode 3 (4WD)		0-14.5 km/h 0-9 mph
Road Transport mode 4 (4WD)		0-32.2 km/h 0-20 mph
Brakes		
Type		Multi-disk, wet
Tyres: (Two available packages)		
Standard Drive Tyre (Dual)		520/85R42 (20.8R42) RIW
Standard Steering Tyre		IF580/80R34 (R1W)
Optional Drive Tyre (Dual)		VF520/85R42 (20.8R42) R2
Rear Wheel Drive		Yes (full time)

On-Board Module Builder		
Module Shape		Round/Cylindrical
Module Dimensions		Diameter up to 244 cm 96 in. Width up to 239 cm 94 in.
Module Weight		2,222-2,676 kg 4,900-5,900 lb
Unload on-the-go		Yes
Wrap system carrying capacity		120 portions
Row Units		
Number of Rows		6
Spacings		76.2, 91.4, 96.5, 101.6 cm 30, 36, 38, 40 in.
Picking Units		
Style		In-line spindle-type picking units
Units Available		PRO-16 HS
Drums		2
Bars Front and Rear		16 front drum, 12 rear drum
Spindles per Bar		20 (PRO-16 HS)
Doffer Pads		Urethane
Moistener Pads		20
Unit Drive Protection		Slip clutch
Tank Capacities		
Fuel Tank		1,250 L 330 gal.
DEF Tank		104.4 L 27.5 gal.
Moistener System		1,363 L 360 gal.
Quick Fill		Yes
Hydraulic System		
Pump Type		Pressure/ flow compensated
Lengths		
Overall Length		10.2 m 33.4 ft
Wheel Base		4.3 m 14.2 ft
Heights		
Transport Mode		4.4 m 14.5 ft
Full Height during module eject		5.2 m 17.2 ft
Weights		
6-Row		31,257 kg 68,900 lb

CS770

Engine		John Deere JD14P - 13.6L
Horsepower	384 kW	515 hp
Power Boost	409 kW	33 hp
Displacement	13.6 L	830 cu in.
Cylinders	6	
Turbocharged/Aftercooled	Yes	
Alternator	Single 330-amp alternator	
Cooling System		
Variable Pitch Reversible Fan	Yes	
Ground Level Access to Coolers	Yes	
Fuel System		
Type	High-Pressure Common Rail	
Governor	Electronic	
On Board Diagnostics	Yes	
Transmission		ProDrive™ automatic-shift (AST)
Gears	Two range	
Field mode 1 (4WD)	0-8.1 km/h	0-5 mph
Field mode 2 (4WD)	0-14.5 km/h	0-9 mph
Field Transport mode 3 (4WD)	0-14.5 km/h	0-9 mph
Road Transport mode 4 (4WD)	0-32.2 km/h	0-20 mph
Brakes		
Type	Multi-disk, wet	
Tyres		
Standard Drive Tyre	520/85R42 (20.8R42)	R1W
Standard Steering Tyre	IF580/80R34	R1W

On-Board Module Builder		
Module Shape	Round/Cylindrical	
Module Dimensions	Diameter up to 244 cm 96 in. Width up to 239 cm 94 in.	
Module Weight	1,995.8-2,449.4 kg	4,400-5,400 lb
Unload on-the-go	Yes	
Wrap system carrying capacity	120 portions	
Row Units		
Number of Rows	8 or 12	
Spacings	76.2, 81.3, 91.4, 96.5, 101.6 cm 30, 32, 36, 38, 40 in.	
Stripping Units		
Style	Bat/brush stripping units	
Unit drive protection	Slip clutch – one per unit	
Tank Capacities		
Fuel Tank	1,022 L	270 gal.
DEF Tank	104.4 L	27.5 gal.
Water Solution Tank	257 L	68 gal.
Heights		
Transport Mode	4.8 m	15.7 ft
Full Height during module eject	5.3 m	17.5 ft
Weights		
Less Header	27,300 kg	60,200 lb
SH8R - 8-row rigid (8-row 40")	30,481 kg	67,200 lb
SH12R - 12-row rigid (12-row 30")	31,797 kg	70,100 lb
SH12F - 12-row folding (12-row 40")	32,477 kg	71,600 lb

Visit JohnDeere.com.au or
JohnDeere.co.nz for complete specifications



Supported by one of the most responsive dealer networks in the business

Nobody cares more about keeping your equipment in solid working order than your John Deere dealer. With a complete inventory of genuine John Deere parts, highly trained service technicians, and a thorough understanding of your business, your John Deere dealer knows how to keep you and your equipment up and running.

A strong name in equipment, and a strong dealership network: get it all with John Deere.



JOHN DEERE

This literature has been compiled for worldwide circulation. While general information, pictures and descriptions are provided, some illustrations and text may include finance, credit, insurance, product options and accessories NOT AVAILABLE in all countries or regions. In some countries, products and accessories may require modifications or additions to ensure compliance with the local regulations of those countries. PLEASE CONTACT YOUR LOCAL DEALER FOR DETAILS. John Deere reserves the right to change specification and design of all products described in this literature without notice. John Deere's green and yellow colour scheme, the leaping deer symbol, and JOHN DEERE are trademarks of Deere & Company. All photography and illustrations contained herein are copyrighted assets of Deere & Company.

JohnDeere.com.au
JohnDeere.co.nz