

Operations Center provides simple but powerful management tools that enable access to data anytime, anywhere through the web, tablet, or phone.

## Summary:

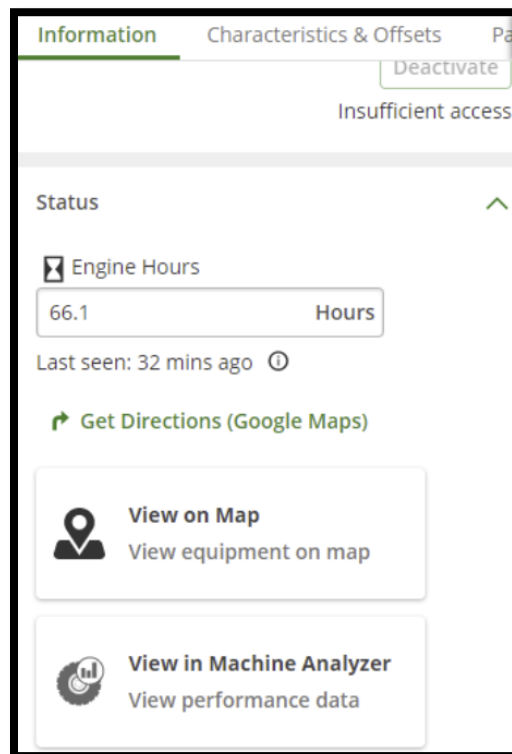
- Edit engine hours in Equipment when no CAN bus is available
- Field Analyzer Integrated into Map
- Customisable PDF reports in Analyze
- Customisable PDF reports in Analysis Mode
- Grouping of active equipment & fields list on Map

## Detailed release notes:

### Edit Engine Hours when no CAN bus available

Tracking maintenance is very important, especially on older equipment. When the equipment does not have a CAN bus, you can manually edit the hours recorded in Equipment in Operations Center.

Simply go to Equipment, select the specific the machine in the Machine tab, and edit the hours under Information>General>Status in the machine details panel on the right side of the screen.

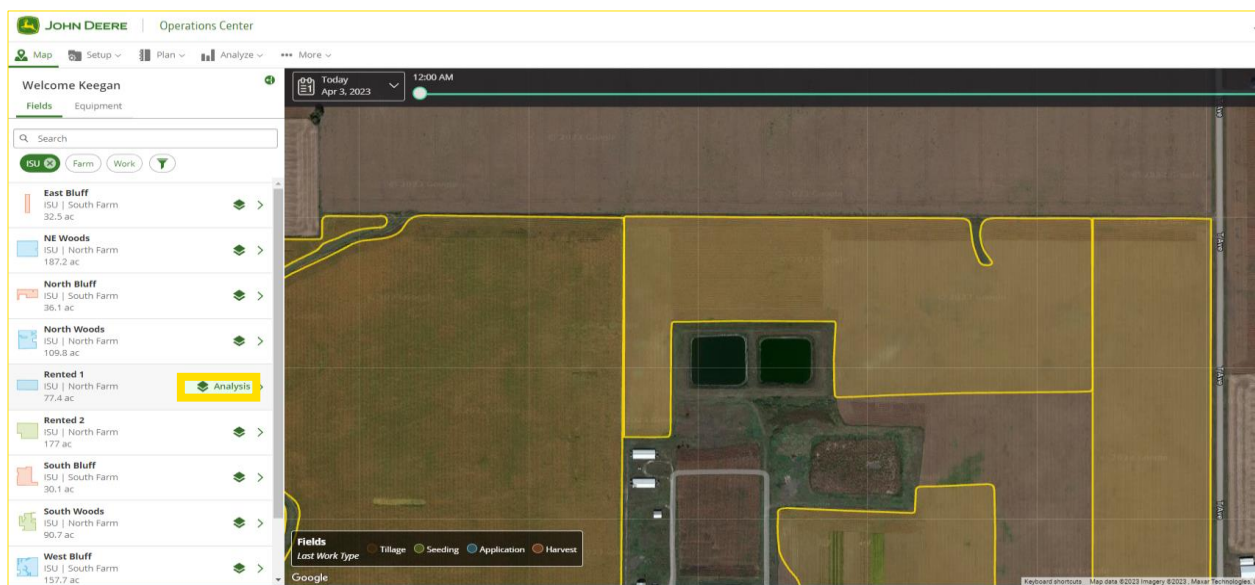


## Field Analyzer Integrated into Map

Navigating to analyse your fields is now easier than ever.

- Use the new work layer icon to view the analysis of a field within Map, no need to go to Field Analyzer.
- Navigate to other fields by selecting their boundaries directly on the map.
- Use the search and filter functions in the fields list to quickly find the field you need.
- Once you're done, close out of field analysis to go back to live monitoring on Map.

Click on the Analysis layer icon in the fields list to jump directly into analysis mode. You can still enter the analysis mode the same way by clicking Field Analyzer in the field pane.

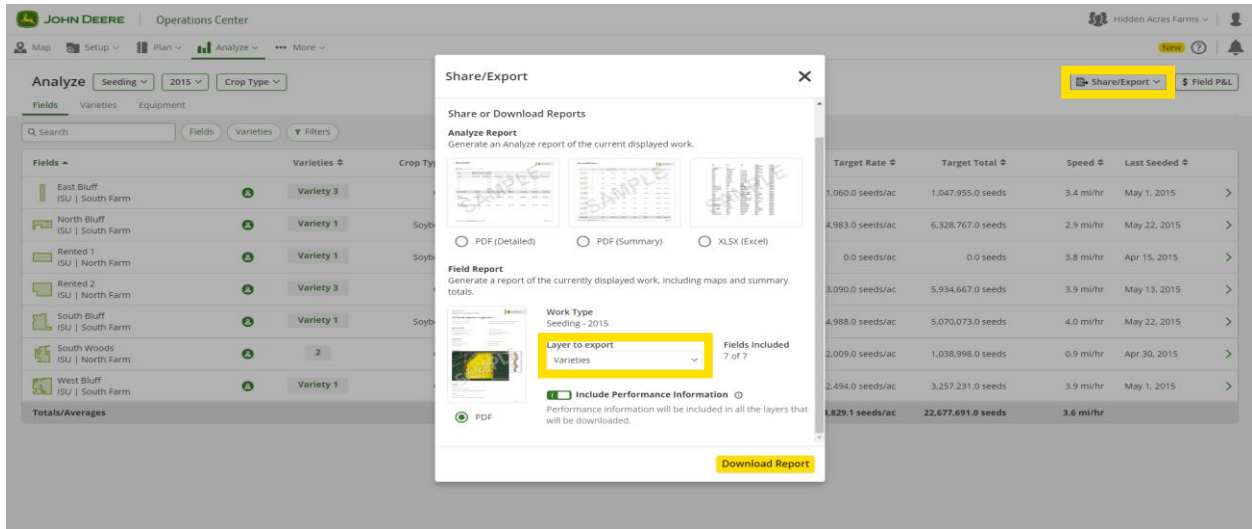


## Customizable PDF reports in Analyze

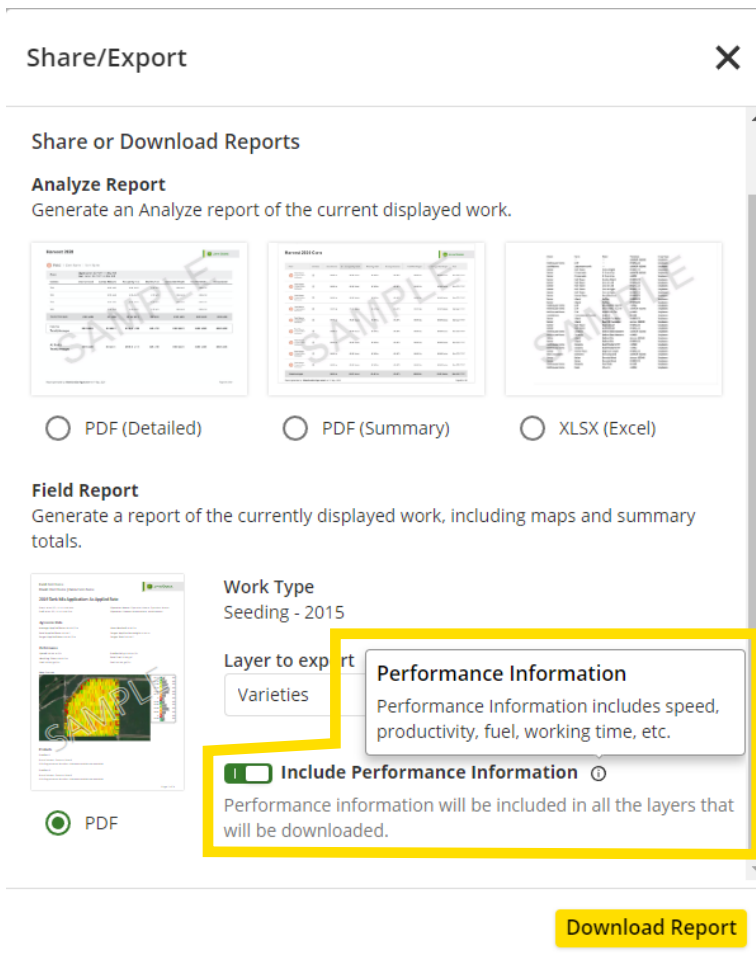
Instead of printing out all your As Applied maps in just a few button clicks, maybe you want a report of what varieties you planted in each field. Well now you have the option to choose from any of your map layers to create a PDF across all the fields for that type of operation. Saving you time when sharing reports with landlords, insurance agents, FSA office or even yourself. Use the filters at the top to single out the fields that you want in your report.

To export a map layer for all your fields:

- Select the operation, crop season, and crop type and crop (optional)
- Apply any additional filters to only include information relevant
- Click Share/Export in the top right corner
- Select the PDF radio button under Field Report
- Under "Layer to export" choose the map layer that you want to see across all your fields
- Select Download Report and go to the Files tool where it can be downloaded



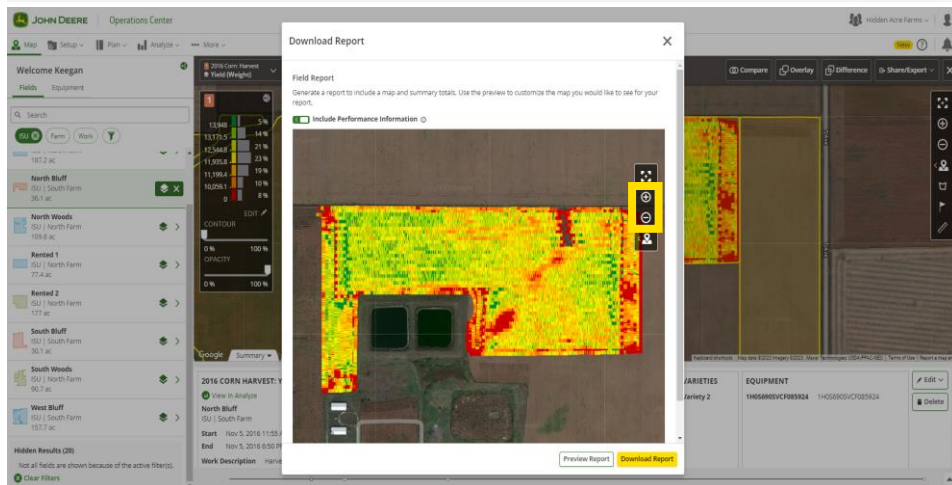
Control what you want to include in your report. You now have the option exclude performance information for each field operation in your report. Some of the performance information includes speed, working time, throughput (dry/wet), fuel efficiency, fuel, total fuel and productivity.



## Customisable PDF reports in Analysis Mode

Sometimes the default zoom is too far out to where you can't clearly see your map. Or you might want to focus in on a certain part of the field. Now you can pan and zoom to print out exactly what you want to show. This new functionality is not yet currently available in compare, overlay, difference or data analysis modes.

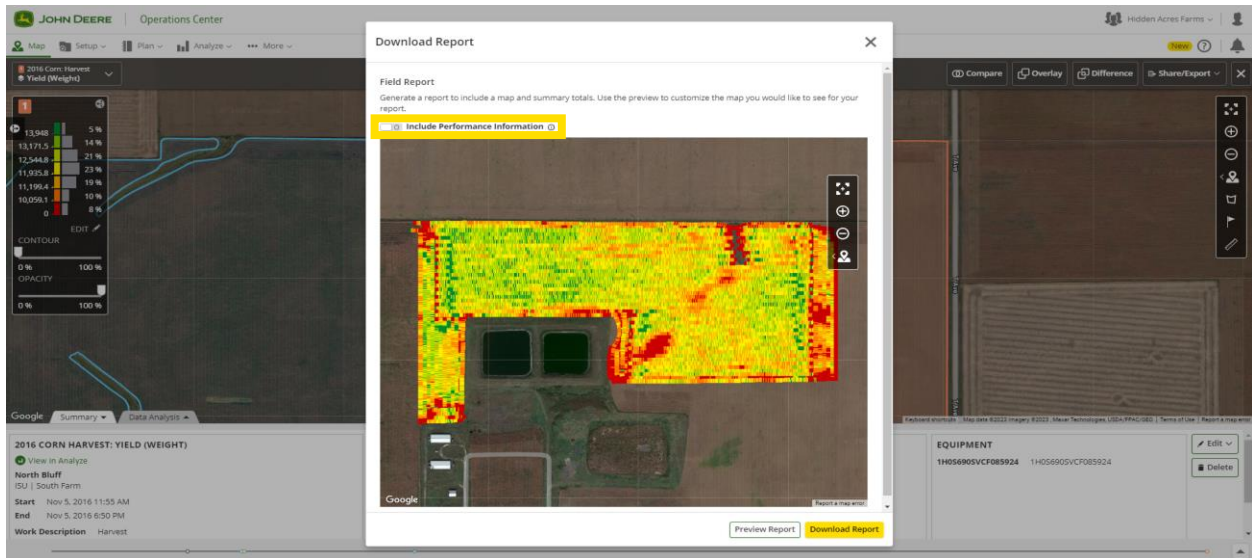
- Click Share/Export in the top right corner and select Download Reports
- Adjust the zoom level and position of the map on the screen to what you want to be shown in your report



You don't want to share your machine performance info with your landlord? Or your report is two pages and you want to shorten it? Now with one click you can toggle that information to not be shown in your report – customising to your wants. Don't worry about having to do this every time you make a report. Operations Center remembers if you had performance information toggled on or off. The information

that is included in performance information section is:

- Speed
- Working Time
- Fuel (total, efficiency, gal/hr and gal/ac)
- Throughput (wet, dry)
- Gauge Wheel Margin
- Productivity



Have you ever run out of ink in the middle of printing maps at the end of the season and are tired of spending money on expensive ink cartridges and toners? To help you save money on ink or the satellite map is doesn't provide any context to what happened in the field, you can now select what map type you want to be shown.





## Grouping of active equipment & fields list on Map

Make it easier to see which equipment and fields are active by bringing them to the top of the lists. Now your equipment and fields lists are sorted by which fields currently are being worked and which machines are running.

The screenshot displays the John Deere mobile application interface. At the top, the John Deere logo is visible. Below it, there are navigation options: Map, Setup, Plan, Analyze, and More. The user is logged in as 'Dan' and the date is 'Today, Feb 7, 2023' at '12:00 AM'. The main content area is divided into 'Fields', 'Equipment', and 'Assets' tabs, with 'Equipment' selected. A search bar and filter buttons (Make, Type, Model, Tag) are present. The equipment list is split into 'ACTIVE EQUIPMENT (5)' and 'INACTIVE EQUIPMENT (58)'. The active equipment list is sorted by current work status, with the most active machine at the top. The inactive equipment list is also sorted by current work status, with the most active machine at the top. A map view is visible on the right side of the screen, showing a field with a road labeled 'NE 56th St'.

Equipment ID	Location	Status
1N04045RPE0006245	5,365 mi	5 secs
1RW8410DLNB200238	5,365 mi	2 mins 5 secs
1RW9570DHNE925293	5,365 mi	23 mins 35 secs
8RX 410_ISG_F9B	5,365 mi	6 mins 40 secs
1H0X910XLME815089	5,365 mi	Working As of now...
154009	5,375 mi	Inactive
1A01795GCLA790209	5,365 mi	Inactive

## Previous Release Notes

- [March 2023](#)
- [January 2023](#)
- [September 2022](#)
- [July 2022](#)
- [May 2022](#)
- [March 2022](#)
- [January 2022](#)
- [November 2021](#)
- [July 2021](#)

Download the Operations Center mobile for iOS® systems from the Apple® App Store® or for Android™ systems from the Google Play™ Store.

iOS is a trademark of Cisco Technology, Inc. used under license by Apple Inc. Apple and App Store are trademarks of Apple Inc. Android and Google Play are trademarks of Google LLC.

