

# StarFire™ 7000 & StarFire™ 7000 Integrated Software Reprogramming



JOHN DEERE

## Reprogramming Methods

There are three methods for reprogramming StarFire™ 7000 receivers and two methods for StarFire™ 7000 Integrated receivers. The instructions below outline how to use each method.

### Over the Air

This method can be used with StarFire™ 7000 Universal and StarFire™ 7000 Integrated Receivers.

1. If you are using a Generation 4 display with an active Wi-Fi® connection or a Modular Telematics Gateway (MTG) connected to an active Wi-Fi® connection or good cellular coverage, the StarFire™ 7000 receiver can be updated using Over the Air updates.

NOTE: An active JDLink™ subscription is required to use the MTG cellular connection.

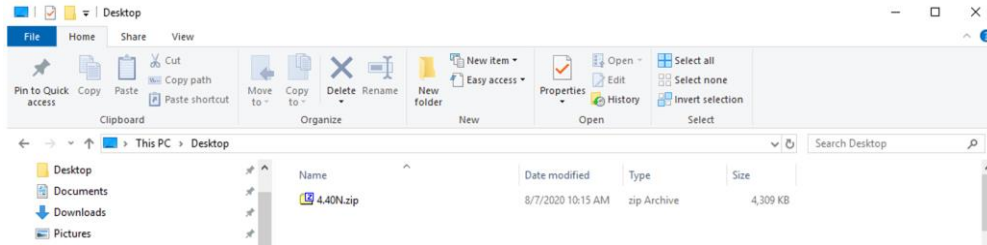
2. Check for updates online > for other devices and review available updates
3. Select GPS Receiver. Click install. An active connection is required during this step. Download time is dependent on internet connection.
4. Once the update is downloaded, reprogramming will typically take 30 minutes for StarFire™ 7000 Universal and StarFire™ 7000 Integrated Receivers.
5. Select “Software Manager”.
6. Select “Check for Updates online”.
7. Select “View Updates for Other Devices”.
8. Select “GPS Receiver”.
9. Select correct file for programming and download. Download time is dependent on internet connection.
10. StarFire™ 7000 Universal Receivers will typically take 30 minutes to complete the software update over CAN. StarFire™ 7000 Integrated Receivers will typically take 3-5 minutes over Ethernet.
11. Keep the key switch in the ON or ACCESSORY position during reprogramming.

# USB Flash Drive through Receiver USB Port

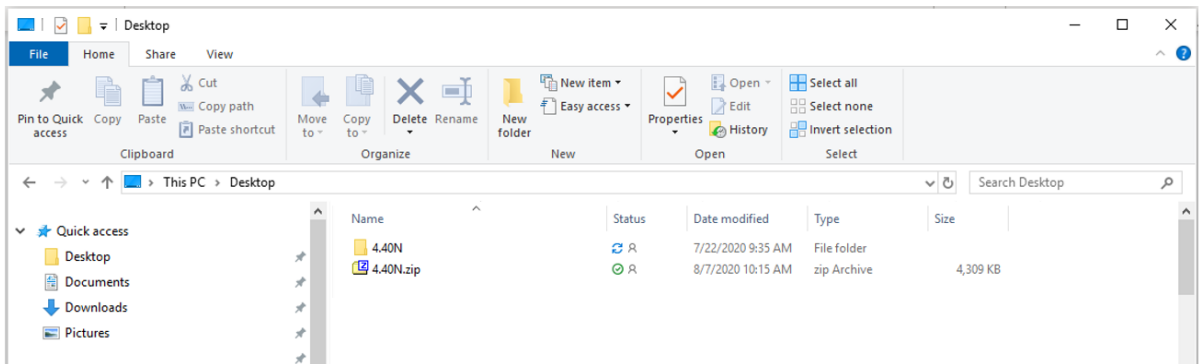
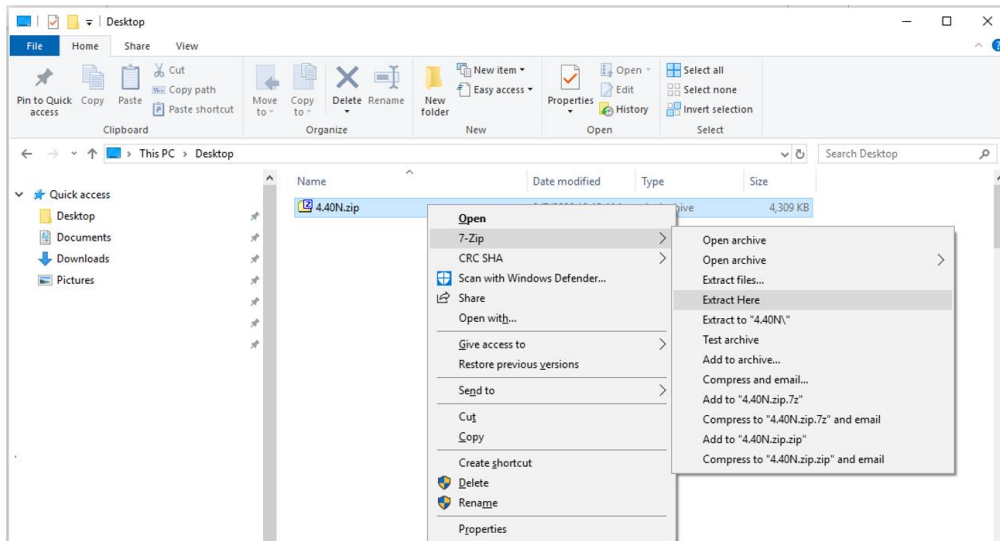
This method can be used with StarFire™ 7000 Universal Receivers.

## Preparing USB At Computer

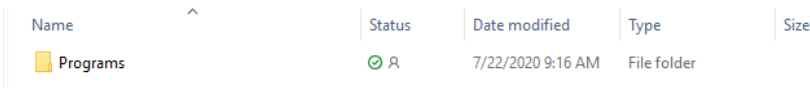
1. Download the new software and save the .zip file to your computer (desktop).



2. Select the file that is now on your desktop and extract the data (this is the same as unzip) to your desktop.



3. Reformat the USB to Windows File Allocation Table "FAT" 32. See USB requirements below.
4. Move the 'Programs' folder to a USB storage device.



5. Verify the .PRC file is on the USB storage device. The file structure should show as USB>Programs>Receiver>SF7000.PRC

#### **At Machine**

1. Identify the StarFire™ 7000 USB port on the bottom of the receiver.
2. Insert your USB with the correct .prc file embedded and proceed to the display within the cab to initiate download.
3. At the display, follow the steps below to initiate the programming of the StarFire™ 7000:
  - a. Select “Main Menu”
  - b. Select “StarFire™ 7000” icon
  - c. Select “USB Drive” (softkey “A”)
  - d. Select “Update Receiver”
  - e. Select correct file for programming This typically takes 3 minutes.
  - f. When prompted, select “continue” button to proceed to normal working functionality

## USB Flash Drive through Display USB Port

**Generation 4 Display:** This method can be used with StarFire™ 7000 Universal and StarFire™ 7000 Integrated Receivers.

### Preparing USB At Computer

1. For a Generation 4 Display, use the Software Manager Utility to download the software package to a USB. See the Generation 4 Display Software Installation Instructions on Stellar Support for details.

### At Machine

1. Insert your USB into the Generation 4 Display with the correct file embedded and follow the steps below to initiate the programming of the receiver.
2. Select “Software Manager”.
3. Select “Install from USB Drive”.
4. Select “View Updates for Other Devices”.
5. Select “GPS Receiver”.
6. Select correct file for programming.
7. StarFire™ 7000 Universal Receivers will typically take 30 minutes to complete the software update over CAN. StarFire™ 7000 Integrated Receivers will typically take 3-5 minutes over Ethernet.

**2630 Display:** This method can be used with StarFire™ 7000 Universal Receivers.

### Preparing USB At Computer

1. For a 2630 Display, use the GS Live Update tool to download the software package to a USB. See the GreenStar™ Software Installation Instructions on Stellar Support for details.
2. Please note that the GS Live Update formatting can be used to update a StarFire™ 7000 Universal Receivers through Receiver USB Port. See instructions above to use this method.

### At Machine

1. Insert your USB into the 2630 Display with the correct file embedded and follow the steps below to initiate the programming of the receiver.
2. Select “Menu”.
3. Select “Message Center”.
4. Select “Reprogram”.
5. Select “GPS Receiver”.

6. Select “Reprogram Device”. In Change to version box, select desired software version with the drop-down menu. Select Accept (C).
7. StarFire™ 7000 Universal Receivers will typically take 30 minutes to complete the software update over CAN.

## USB Requirements

### Connectivity

- USB 2.0 or better
- Recognized as a removeable disk

### Format

- Formatted to Windows™ file allocation table (FAT) 32 prior to use
- No password or encryption capabilities on the USB drive

### Memory Capacity

- 8-32 GB